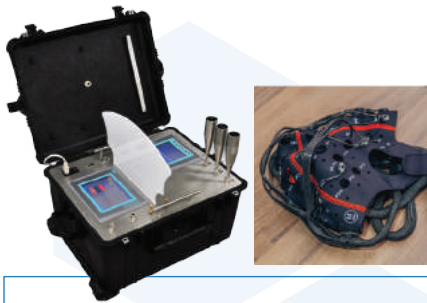


# SC300P SCIENTIFIC OLFACTOMETER

Portable Olfactometer with EEG and FNIR Capabilities



Scentroid SC300-P is a specialized multi-sensory olfactometer with EEG and FNIR capabilities for advanced psychological and physiological research and treatment. The SC300-P has been used by researchers and doctors to research and treat a variety of disorders including Traumatic Post Stress disorder.



## Prepare Air Samples

Clean air is supplied by the portable air supply module and up to 8 samples are connected to the same sample ports

## Begin with Test Mode

Panelists are fitted with an EEG cap and the system is set to record responses. A test mode is selected, and audio and visual data is loaded for the presentation

## Sensory Presentation

The SC300P will then present olfactory, audio, and video stimuli in accordance with the defined test mode

## Record EEG Triggers

During each presentation, the SC300P will trigger the EEG with the identification of audio, video and olfactory stimuli presented

## Use the SC300P for:

- Olfactory sensitivity testing
- PTSD study and treatment
- Multi-sensory psychological studies linking scent to brainwaves
- Diagnostic and treatment of olfactory disorders
- Product testing and market research

## Complete Solution

The SC300-P is built into two rugged waterproof Pelican® cases weighing less than 20 Kg each for ease of transportation.

## Dedicated Administrator Station

Admin Station with the Siemens 8" touch screen to view live results, analyse data.

## Software Reliability

Uses Siemens industrial PLC with real-time operating system for reliable operation and a seamless integration with EEG and FNIR instruments.

## Zero Contamination

All mass flow controllers, solenoid valves have 100% stainless steel wetted surfaces.

## Test Modes

Loaded with variety of physiological and psychological test modes such as olfactory/audio psychological evaluation where pulses of odour and visual stimuli are presented.

## Odour Library

Up to 8 odours simultaneously. The odours are pulled automatically into the SC300-P using vacuum rather than pressurization.

<b>Testing Modes</b>	Sensitivity analysis, Audio/Olfactory pulse presentation, Psychological video/olfactory analysis, custom audio/olfactory/image test mode
<b>Visual Interface</b>	32" touch screen and Siemens industrial 6" touch screen for sensitivity analysis
<b>Audio Interface</b>	Built in speakers with Dolby digital surround sound
<b>Olfactory Interface</b>	Choice of sniffing port or half-face disposable masks
<b>Dilution Interface</b>	Variable
<b>Number of simultaneous odour presentations</b>	4 upgradable to 8
<b>Pres. Flow Rate</b>	5 lpm to 30 lpm
<b>EEG Interface</b>	RS232
<b>FNIR Interface</b>	RS232
<b>EPrime Interface</b>	RS232, USB, Ethernet optional
<b>Control Hardware</b>	Siemens industrial real time controller
<b>Test Administrator Interface</b>	Siemens industrial 8" full color touch-screen
<b>Display Language</b>	English, French, Spanish, Chinese, German and Turkish