

Wildfire

Smoke Detection & Monitoring Solutions

Scentroid has all the Equipment You Need to Provide Ample Warning and Valuable Metrics at Early Stage.

The combination of stationary monitoring, drone-based mobile monitoring, and personal safety device monitoring provides a comprehensive 3 tiered approach to forest fire smoke monitoring.

Stationary Monitoring Devices

Provide continuous monitoring of air quality in the forest or nearby residential area. It collects valuable real-time data of air quality to differentiate any forest fire and monitoring the growth of the fire.

CTair



CTmini



- High Accuracy Dust Analysis
- Solar Powered Option
- Smart, Compact & Easy to Use

Drone-Based Mobile Monitoring Devices

Offer an additional layer of monitoring, enabling the detection of hot-spots and hard-to-reach areas, along with providing more granular data on the spatial and temporal patterns of the smoke.

DR2000



Thermal Camera



- Hazardous Sampling
- Detects Infrared Energy (heat)
- Measures Wind Speed

Personal Safety Monitoring Devices

Provide real-time data on workers exposure levels, ensuring individual workers are protected from potential health hazards.

PMD100



- Personalized & Portable Tracking
- SOS Alerts & Build-in Alarms
- Real-Time Readings

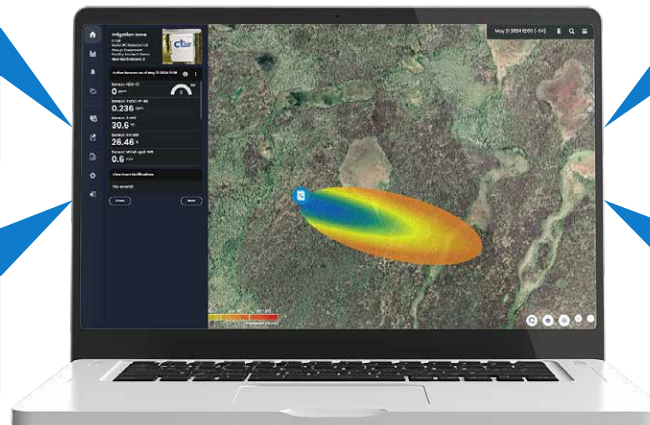
How can SIMS3 (Sensor Information Management System) help with Monitoring Wildfire Smoke?

Analyze Data from Sensors

Pick up any signs of wildfire, or differentiate if it's a campfire or construction dust

Continuous Updates

Identify where the smoke comes from and continue monitoring the intensity of the smoke



AI Powered

Powered by Artificial Intelligence (AI) to predict weather and smoke direction

Alarms/Notifications

SMS and/or email alerts to be sent out to authorized operators when smoke reaches a certain concentration level and approaches residential area